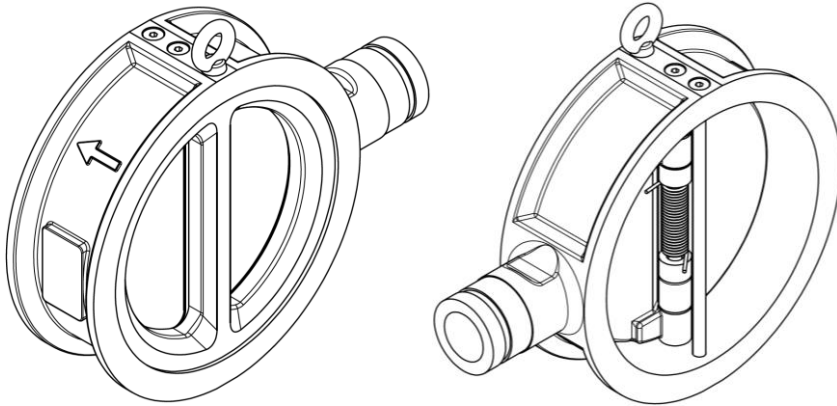


FOAM-IX, FOAM INJECTION VALVE

The Foam-IX is a non-return valve with an integrated injection point.



HIGH VISCOUS FOAM CONCENTRATE

Foam-IX is a unique solution that enables the use of highly viscous (fluorine-free) extinguishing foam concentrates. It optimizes the mixing of foam concentrate and water by using induced turbulence. By using Foam-IX, the required distance between the extinguishing foam concentrate injection point and the manifold is considerably shortened.

A common characteristic of fluorine-free foam concentrate is a higher viscosity, unlike foam concentrates with fluorine, which makes mixing more difficult. Correct mixing is necessary to obtain an effective pre-mix for extinguishing.

FEATURES

- + Shorter distance between injection point and manifold possible.
- + Compact and interchangeable with an existing non-return valve.
- + Instant mixing after injection in any water flow, even at low flow rates.
- + Extinguishing water, upstream of the injection point, is shielded from the foam concentrate.
- + Simplifies the transition to fluorine-free extinguishing foam due to better mixing.

WE KNOW FIRE
WE KNOW SAFETY
WE KNOW YOU

Since 1925 Saval is a well known name in fire fighting. Every fire risk requires a professional assessment of the situation. Choosing the right type of detection and extinguishing and the location are of crucial importance. From Saval, you will receive sound advice.

We also have a long experience and extensive know-how to design, build and maintain these systems. The small chance that we face a new problem will enable us to search the best solution for you. From drawing to installation, we know what your situation requires.

Saval B.V.
Huifakkerstraat 22 | 4815 PN Breda | NL
P.O. Box 3499 | 4800 DL Breda | NL

sales **t** +31 76 548 70 00
service **t** +31 76 548 72 61
f +31 76 541 79 22
systems@saval.nl

saval.nl



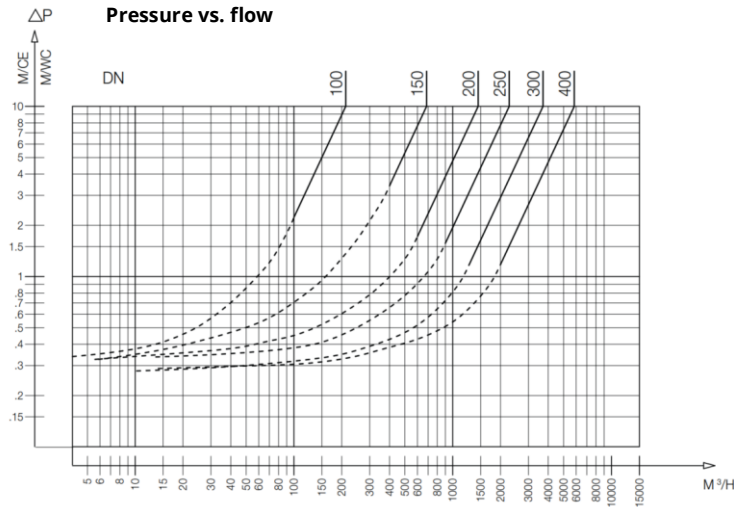
FOAM-IX PART NUMBERS

| Water side connection Size | Foam concentrate connection Nominal pipe size groove connection | No. of foam inlet(s) | Pressure rating (PN) bar | Part number |
|----------------------------|--|----------------------|--------------------------|-------------|
| DN 100 | DN 32 | 1 | 16 | 9345501 |
| 150 | 40 | 1 | 16 | 9345502 |
| 200 | 50 | 1 | 16 | 9345503 |
| 250 | 65 | 1 | 16 | 9345504 |
| 300 | 65 | 2 | 12 | 9345505 |
| 400 | 65 | 2 | 12 | 9345506 |

TECHNICAL FEATURES

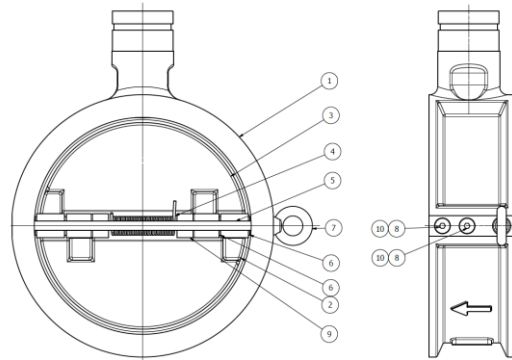
| | |
|--|---|
| Operating temperatures | -10 °C to 80°C (NBR Seal) |
| PN (See table Part Number) | Permissible operating pressure in water |
| *1 Valve size (See table Part Number) | Overall dimensions according to EN558-1 series 50 |
| *2 Foam connection details (See table Part Number) | Grooved coupling inlet |
| Medium | Water |

PERFORMANCE



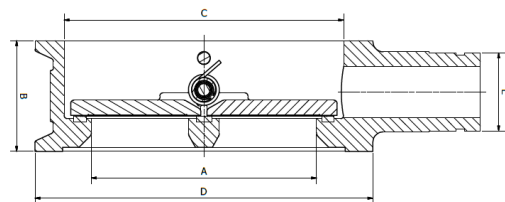
MATERIALS

| No. | Description | DN | Materials |
|-----|-------------|-----------|-----------------|
| 1 | Body | 100 - 400 | Bronze |
| 2 | Plates | 100 - 400 | Bronze |
| 3 | Seal | 100 - 400 | FKM |
| 4 | Spring | 100 - 400 | Stainless steel |
| 5 | Stem | 100 - 400 | Stainless steel |
| 6 | Bearing | 100 - 400 | PTFE |
| 7 | Eye bolt | DN >150 | Steel XC15 |
| 8 | Plug | 100 - 400 | Brass |
| 9 | Packing | 100 - 400 | Acetal resin |
| 10 | Packing | xx- xx | Rubber |



DIMENSIONS

| A | B | C | D | E |
|-----|-----|-----|-----|----|
| mm | mm | mm | mm | DN |
| 100 | 64 | 114 | 164 | 32 |
| 150 | 76 | 168 | 220 | 40 |
| 200 | 95 | 219 | 275 | 50 |
| 250 | 108 | 273 | 330 | 65 |
| 300 | 143 | 324 | 380 | 65 |
| 400 | 191 | 410 | 491 | 65 |



The information in this document is supplied for information and is not binding. Savall B.V reserves the right to change or update this datasheet without notice.